

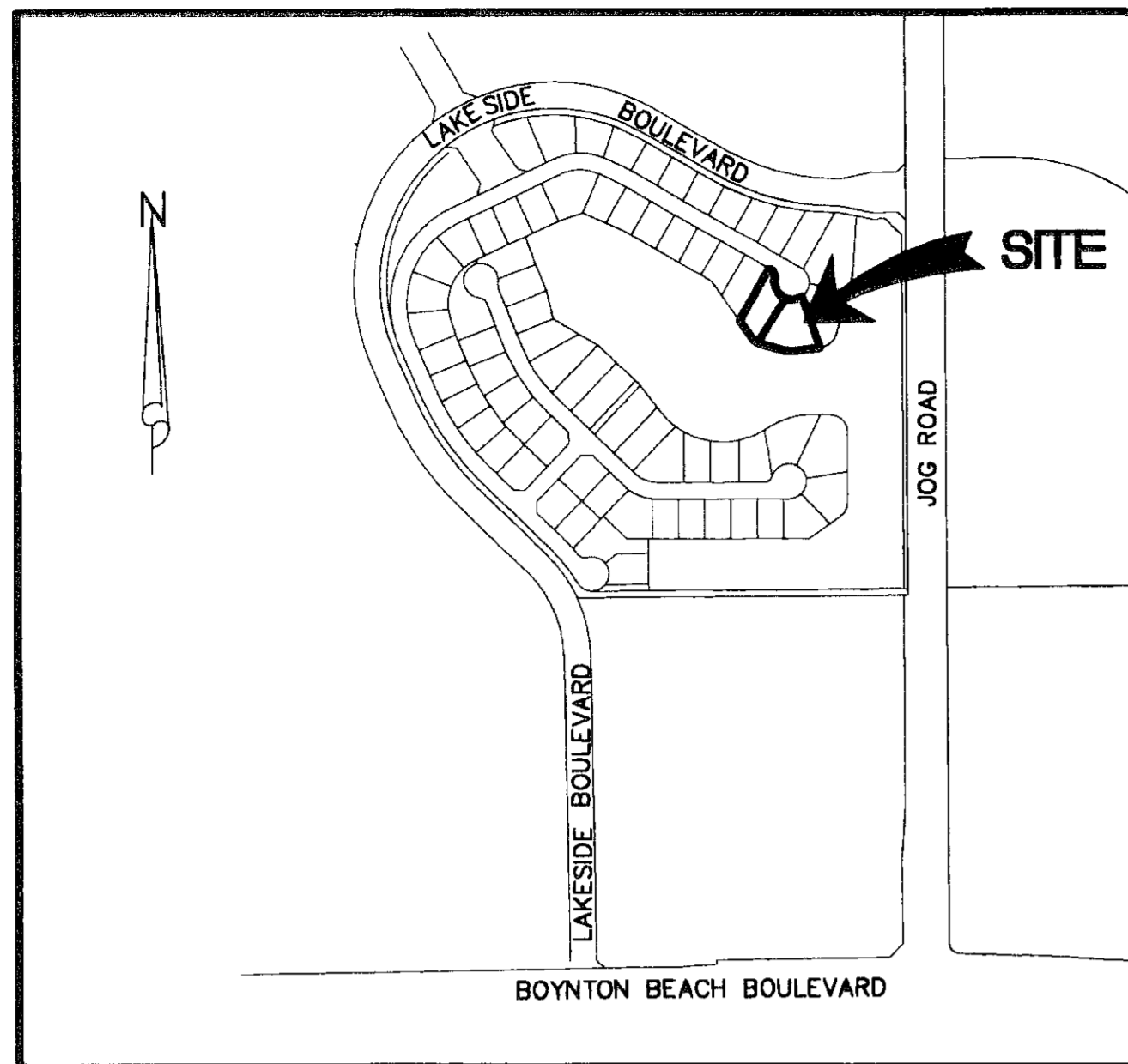
0391-021

ENCLAVE AT BOYNTON WATERS - REPLAT NO. 4

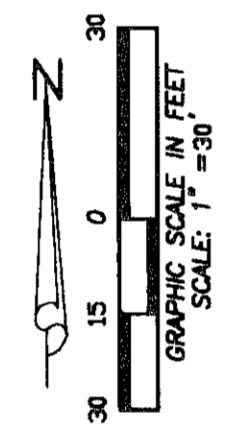
AT LAKES OF BOYNTON BEACH P.U.D., POD B
SITUATE IN SECTION 22, TOWNSHIP 45 SOUTH, RANGE 42 EAST, PALM BEACH COUNTY, FLORIDA
BEING A REPLAT OF LOTS 15 AND 16 OF ENCLAVE AT BOYNTON WATERS, AS RECORDED IN PLAT
BOOK 99, PAGES 105 THROUGH 109, INCLUSIVE, OF THE PUBLIC RECORDS OF PALM BEACH COUNTY, FLORIDA
SEPTEMBER, 2006 SHEET 2 OF 2

183

STATE OF FLORIDA
COUNTY OF PALM BEACH
THIS PLAT WAS FILED FOR
RECORD AT _____
THIS _____ DAY OF _____
A.D. 2006 AND DULY RECORDED
IN PLAT BOOK _____ ON
PAGES _____ THROUGH _____
SHARON R. BOCK, CLERK
AND COMPTROLLER
BY: _____
DEPUTY CLERK

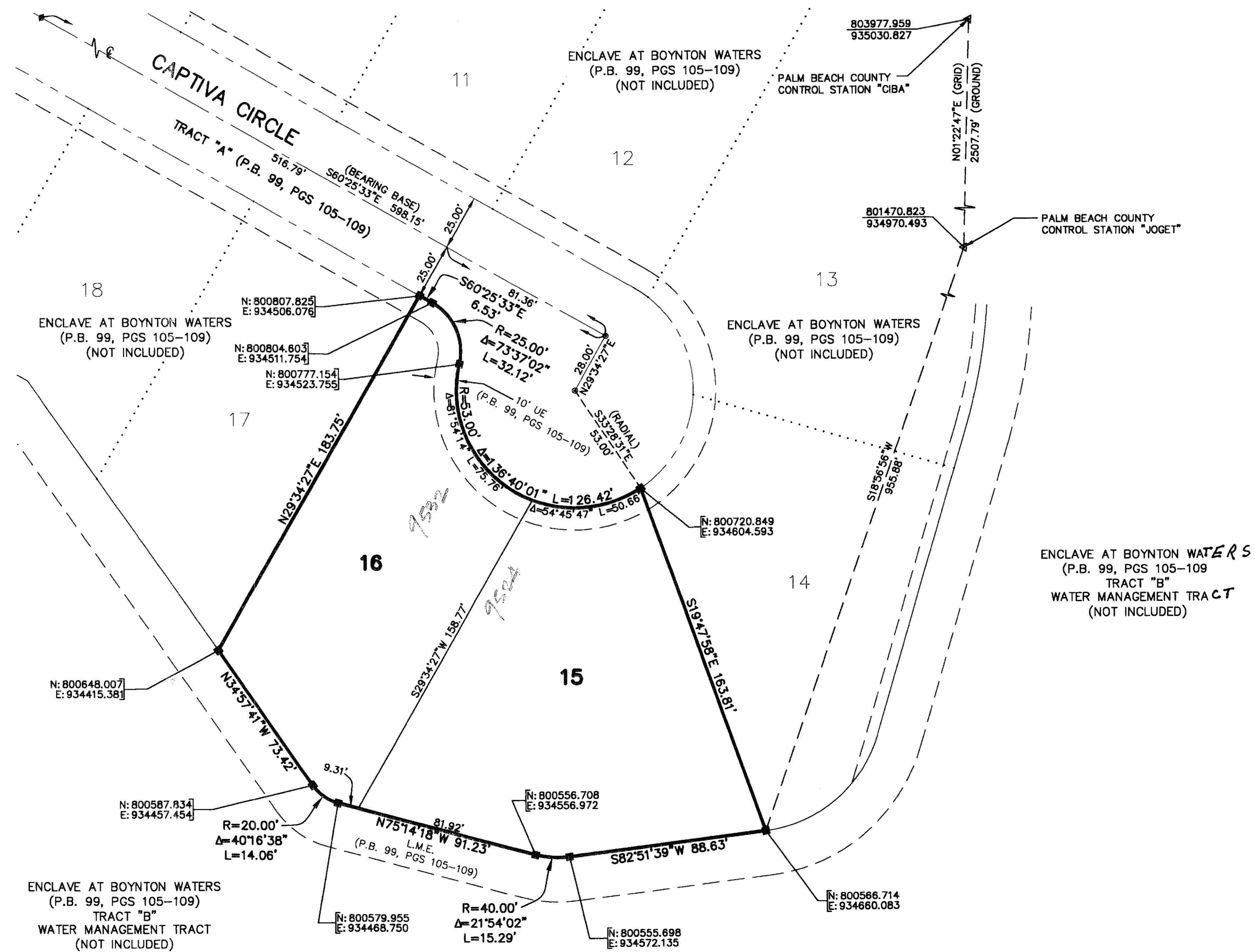


LOCATION MAP



LEGEND

- R = RADIUS
- Δ = CENTRAL ANGLE/DELTA
- L = ARC LENGTH
- L.M.E. = LAKE MAINTENANCE EASEMENT
- P.B. = PLAT BOOK
- PGS. = PAGES
- U.E. = UTILITY EASEMENT
- = PERMANENT REFERENCE MONUMENT (PRM) SET PRM LB 7055



REPLAT NO. 4
ENCLAVE AT BOYNTON WATERS
SECTION 22, TOWNSHIP 45 SOUTH, RANGE 42 EAST, PALM BEACH COUNTY, FLORIDA
PLAT BOOK 99, PAGES 105 THROUGH 109, INCLUSIVE
RECORDED SEPTEMBER 20, 2006
BY: SHARON R. BOCK, CLERK AND COMPTROLLER

W Wantman Group, Inc.
Engineering ♦ Surveying ♦ Mapping
2035 VISTA PARKWAY, SUITE 100
WEST PALM BEACH, FL 33411
(561) 687-2220 phone (561) 687-1110 fax
CERT No. 6091 - LB No. 7055